

PROJECT: 16SP.3914.3

REFERENCE: N/A

CONTENTS

SHEET NO.	DESCRIPTION
1	TITLE SHEET
2	LEGEND (SOIL & ROCK)
3	SITE PLAN
4	PROFILE
5-6	BORING LOGS

STATE OF NORTH CAROLINA

DEPARTMENT OF TRANSPORTATION

DIVISION OF HIGHWAYS

GEOTECHNICAL ENGINEERING UNIT

STRUCTURE

SUBSURFACE INVESTIGATION

COUNTY HYDE

PROJECT DESCRIPTION OCRACOKE FERRY TERMINAL IMPROVEMENTS

SITE DESCRIPTION FLOATING DOCK

STATE	STATE PROJECT REFERENCE NO.	SHEET NO.	TOTAL SHEETS
N.C.	16SP.3914.3	1	6

CAUTION NOTICE

THE SUBSURFACE INFORMATION AND THE SUBSURFACE INVESTIGATION ON WHICH IT IS BASED WERE MADE FOR THE PURPOSE OF STUDY, PLANNING AND DESIGN, AND NOT FOR CONSTRUCTION OR PAY PURPOSES. THE VARIOUS FIELD BORING LOGS, ROCK CORES AND SOIL TEST DATA AVAILABLE MAY BE REVIEWED OR INSPECTED IN RALEIGH BY CONTACTING THE N. C. DEPARTMENT OF TRANSPORTATION, GEOTECHNICAL ENGINEERING UNIT, AT (919) 707-6850. THE SUBSURFACE PLANS AND REPORTS, FIELD BORING LOGS, ROCK CORES AND SOIL TEST DATA ARE NOT PART OF THE CONTRACT.

GENERAL SOIL AND ROCK STRATA DESCRIPTIONS AND INDICATED BOUNDARIES ARE BASED ON A GEOTECHNICAL INTERPRETATION OF ALL AVAILABLE SUBSURFACE DATA AND MAY NOT NECESSARILY REFLECT THE ACTUAL SUBSURFACE CONDITIONS BETWEEN BORINGS OR BETWEEN SAMPLED STRATA WITHIN THE BOREHOLE. THE LABORATORY SAMPLE DATA AND THE IN SITU (IN-PLACE) TEST DATA CAN BE RELIED ON ONLY TO THE DEGREE OF RELIABILITY INHERENT IN THE STANDARD TEST METHOD. THE OBSERVED WATER LEVELS OR SOIL MOISTURE CONDITIONS INDICATED IN THE SUBSURFACE INVESTIGATIONS ARE AS RECORDED AT THE TIME OF THE INVESTIGATION. THESE WATER LEVELS OR SOIL MOISTURE CONDITIONS MAY VARY CONSIDERABLY WITH TIME ACCORDING TO CLIMATIC CONDITIONS INCLUDING TEMPERATURES, PRECIPITATION AND WIND, AS WELL AS OTHER NON-CLIMATIC FACTORS.

THE BIDDER OR CONTRACTOR IS CAUTIONED THAT DETAILS SHOWN ON THE SUBSURFACE PLANS ARE PRELIMINARY ONLY AND IN MANY CASES THE FINAL DESIGN DETAILS ARE DIFFERENT. FOR BIDDING AND CONSTRUCTION PURPOSES, REFER TO THE CONSTRUCTION PLANS AND DOCUMENTS FOR FINAL DESIGN INFORMATION ON THIS PROJECT. THE DEPARTMENT DOES NOT WARRANT OR GUARANTEE THE SUFFICIENCY OR ACCURACY OF THE INVESTIGATION MADE, NOR THE INTERPRETATIONS MADE, OR OPINION OF THE DEPARTMENT AS TO THE TYPE OF MATERIALS AND CONDITIONS TO BE ENCOUNTERED. THE BIDDER OR CONTRACTOR IS CAUTIONED TO MAKE SUCH INDEPENDENT SUBSURFACE INVESTIGATIONS AS HE DEEMS NECESSARY TO SATISFY HIMSELF AS TO CONDITIONS TO BE ENCOUNTERED ON THE PROJECT. THE CONTRACTOR SHALL HAVE NO CLAIM FOR ADDITIONAL COMPENSATION OR FOR AN EXTENSION OF TIME FOR ANY REASON RESULTING FROM THE ACTUAL CONDITIONS ENCOUNTERED AT THE SITE DIFFERING FROM THOSE INDICATED IN THE SUBSURFACE INFORMATION.

- NOTES:
- THE INFORMATION CONTAINED HEREIN IS NOT IMPLIED OR GUARANTEED BY THE N. C. DEPARTMENT OF TRANSPORTATION AS ACCURATE NOR IS IT CONSIDERED PART OF THE PLANS, SPECIFICATIONS OR CONTRACT FOR THE PROJECT.
 - BY HAVING REQUESTED THIS INFORMATION, THE CONTRACTOR SPECIFICALLY WAIVES ANY CLAIMS FOR INCREASED COMPENSATION OR EXTENSION OF TIME BASED ON DIFFERENCES BETWEEN THE CONDITIONS INDICATED HEREIN AND THE ACTUAL CONDITIONS AT THE PROJECT SITE.

PERSONNEL

LINDSAY PUGH

MID-ATLANTIC DRILLING

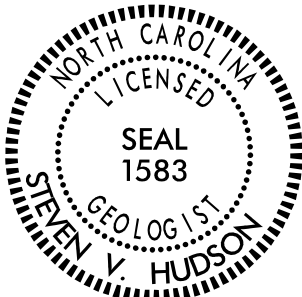
INVESTIGATED BY STEVEN V. HUDSON, LG

DRAWN BY STEVEN V. HUDSON, LG

CHECKED BY J. LEE STONE, LG

SUBMITTED BY STEVEN V. HUDSON, LG

DATE AUGUST 2017



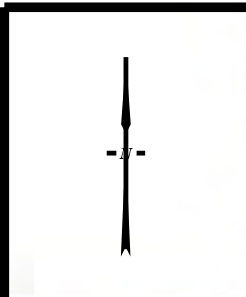
SIGNATURE

DATE

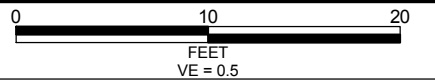
DOCUMENT NOT CONSIDERED FINAL
UNLESS ALL SIGNATURES COMPLETED

***NORTH CAROLINA DEPARTMENT OF TRANSPORTATION
DIVISION OF HIGHWAYS
GEOTECHNICAL ENGINEERING UNIT
SUBSURFACE INVESTIGATION
SOIL AND ROCK LEGEND, TERMS, SYMBOLS, AND ABBREVIATIONS***

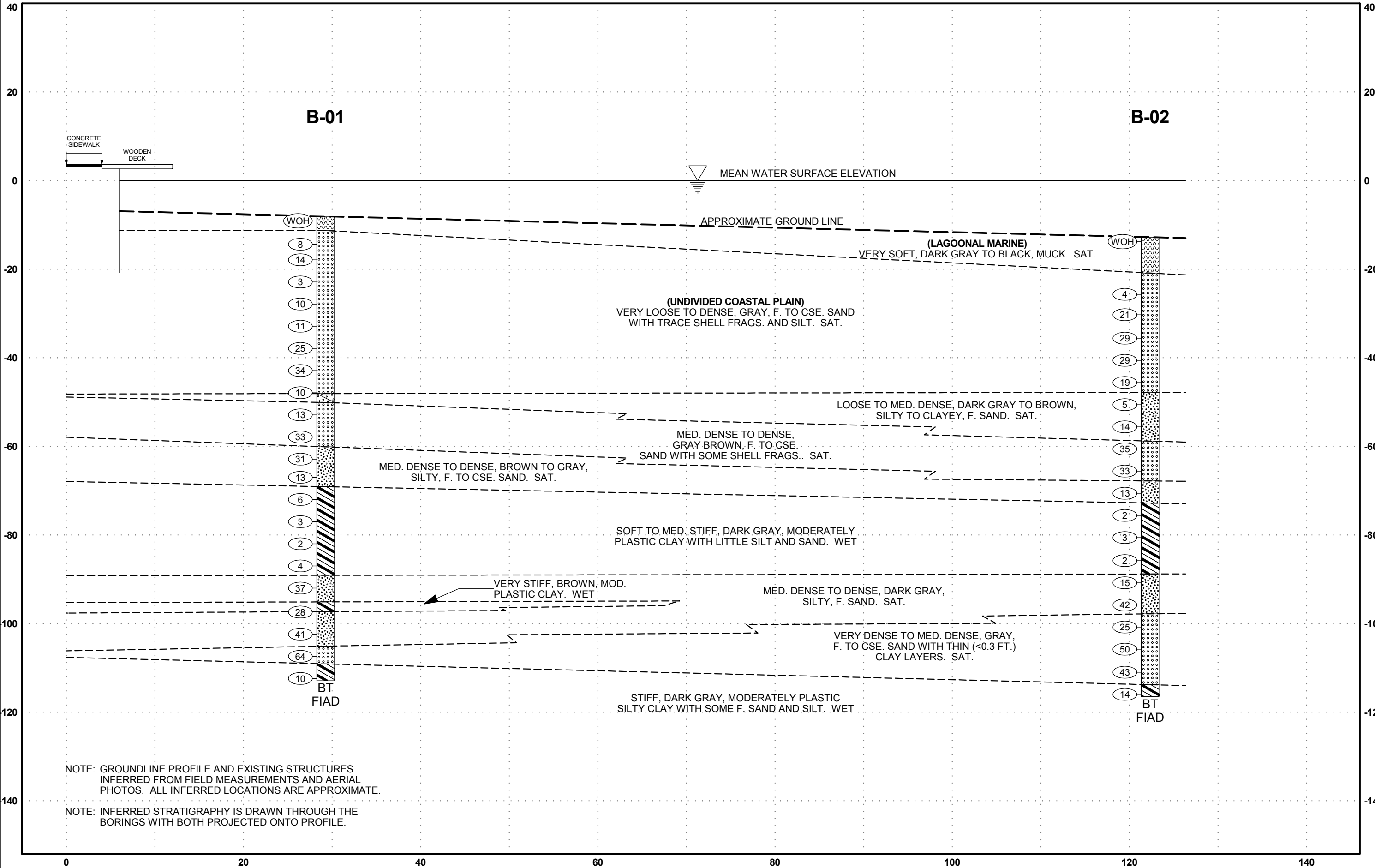
[illegible]



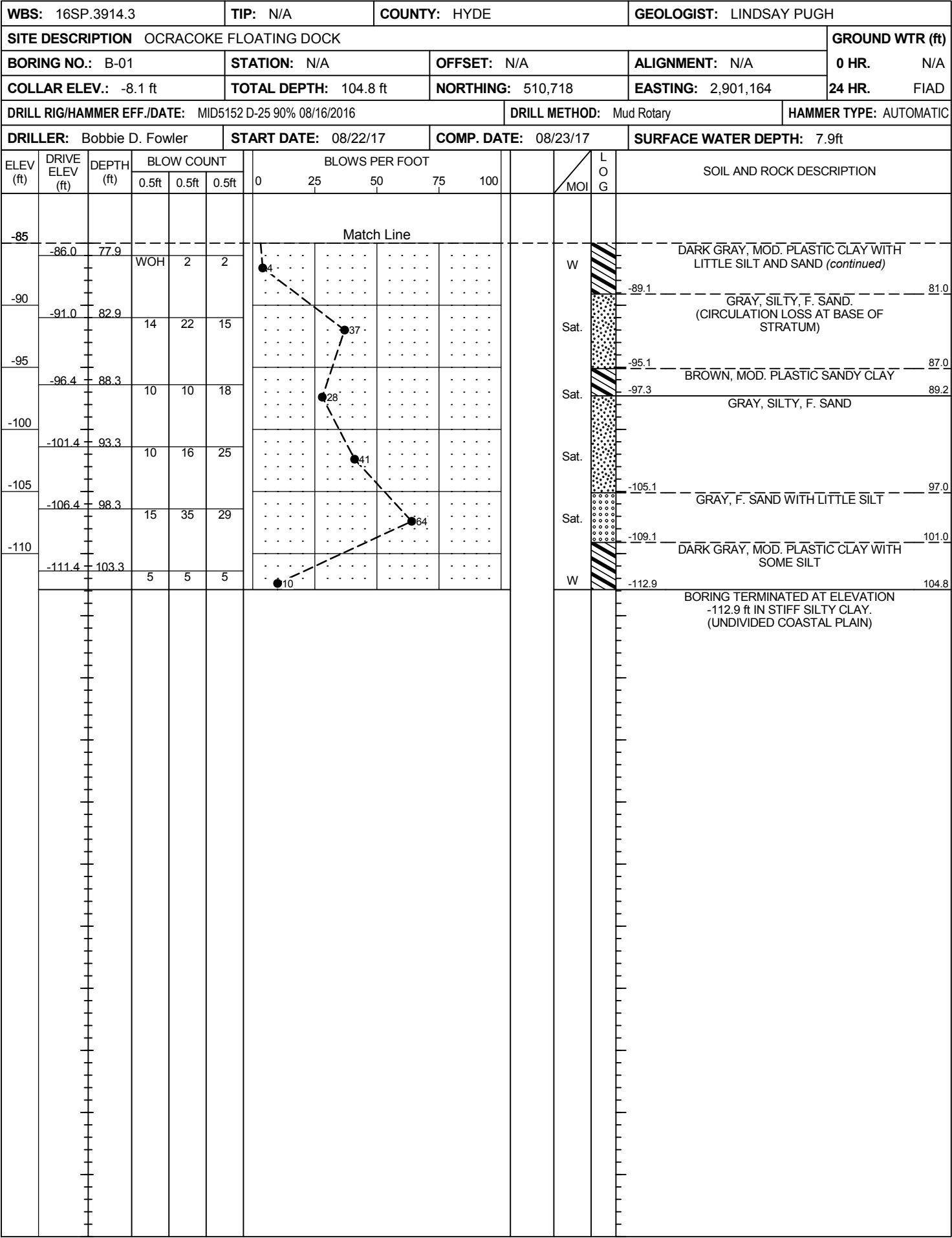
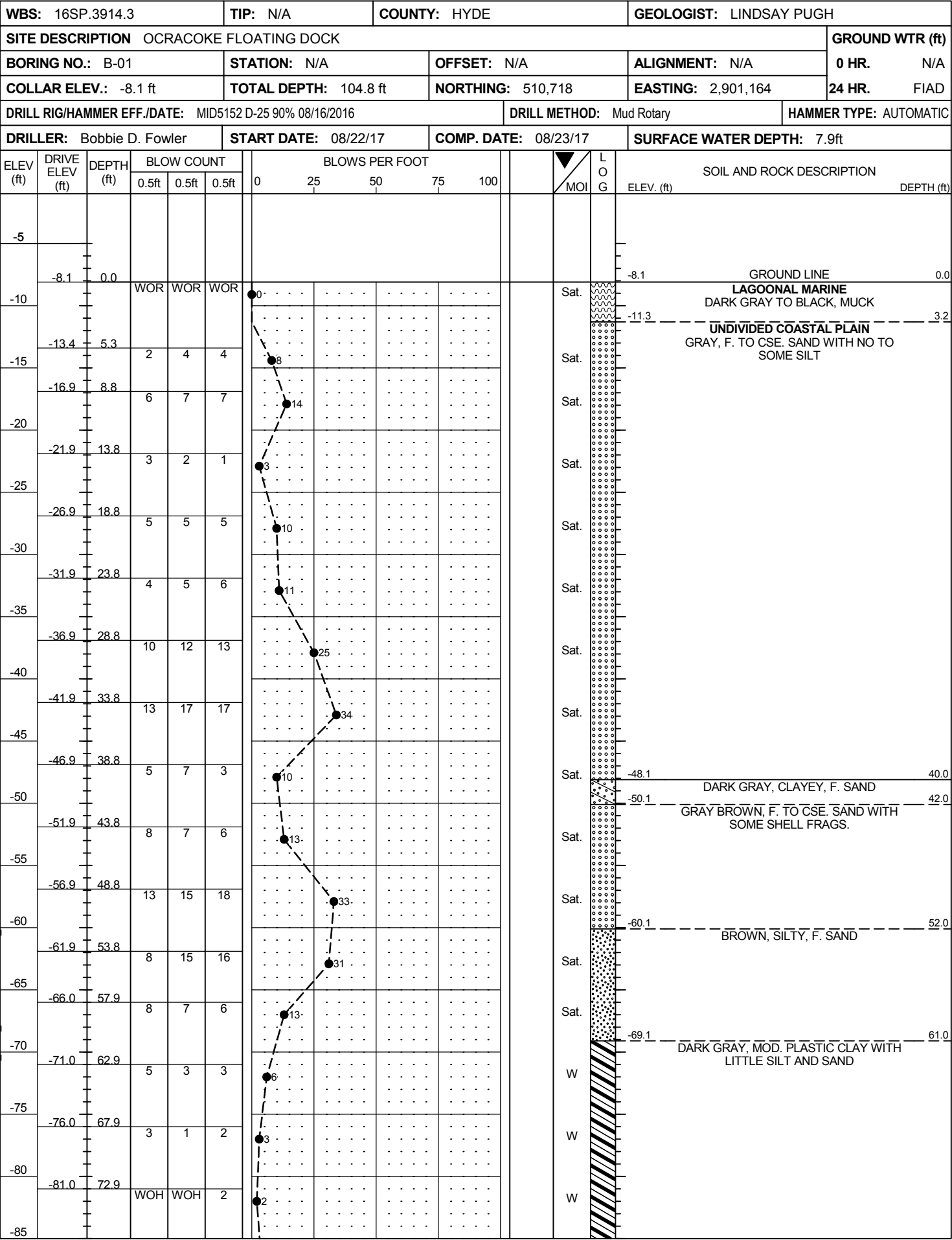
PROJECT REFERENCE NO.	SHEET NO.
16SP.3914.3	3
SITE PLAN	
0 50 100 FEET	



OCRACOKE PROFILE



GEOTECHNICAL BORING REPORT
BORE LOG



NCDOT BORE DOUBLE OCRACOKE GEO GINT GPL NCDOT CATLIN GDI 08/29/17

GEOTECHNICAL BORING REPORT
BORE LOG



WBS: 16SP.3914.3			TIP: N/A		COUNTY: HYDE		GEOLOGIST: LINDSAY PUGH								
SITE DESCRIPTION OCRACOKE FLOATING DOCK							GROUND WTR (ft)								
BORING NO.: B-02		STATION: N/A		OFFSET: N/A		ALIGNMENT: N/A		0 HR.	N/A						
COLLAR ELEV.: -12.8 ft		TOTAL DEPTH: 103.7 ft		NORTHING: 510,628		EASTING: 2,901,189		24 HR.	FIAD						
DRILL RIG/HAMMER EFF./DATE: MID5152 D-25 90% 08/16/2016					DRILL METHOD: Mud Rotary			HAMMER TYPE: AUTOMATIC							
DRILLER: Bobbie D. Fowler		START DATE: 08/23/17		COMP. DATE: 08/23/17		SURFACE WATER DEPTH: 12.5ft									
ELEV (ft)	DRIVE ELEV (ft)	DEPTH (ft)	BLOW COUNT			BLOWS PER FOOT					MOI	LOG	SOIL AND ROCK DESCRIPTION	DEPTH (ft)	
			0.5ft	0.5ft	0.5ft	0	25	50	75	100					
-10															
	-12.8	0.0													
-15			WOR	WOR	WOR	0						Sat.		GROUND LINE	0.0
														LAGOONAL MARINE	
														DARK GRAY TO BLACK, MUCK	
-20															
-25	-24.7	11.9													
			3	2	2	4						Sat.			
-30	-29.3	16.5													
			7	9	12	21						Sat.			
-35	-34.6	21.8													
			11	13	16	29						Sat.			
-40	-39.6	26.8													
			11	13	16	29						Sat.			
-45	-44.6	31.8													
			8	11	8	19						Sat.			
-50	-49.6	36.8													
			4	2	3	5						Sat.			
-55	-54.6	41.8													
			10	10	4	14						Sat.			
-60	-59.6	46.8													
			9	16	19	35						Sat.			
-65	-64.6	51.8													
			5	14	19	33						Sat.			
-70	-69.6	56.8													
			4	5	8	13						Sat.			
-75	-74.6	61.8	WOH	1	1	2									
-80	-79.6	66.8		1	2	3									
-85	-84.8	72.0	WOH	WOH	2	2									
-90	-89.8	77.0													

WBS: 16SP.3914.3			TIP: N/A			COUNTY: HYDE			GEOLOGIST: LINDSAY PUGH				
SITE DESCRIPTION OCRACOKE FLOATING DOCK									GROUND WTR (ft)				
BORING NO.: B-02			STATION: N/A			OFFSET: N/A			ALIGNMENT: N/A				
COLLAR ELEV.: -12.8 ft			TOTAL DEPTH: 103.7 ft			NORTHING: 510,628			EASTING: 2,901,189				
DRILL RIG/HAMMER EFF./DATE: MID5152 D-25 90% 08/16/2016						DRILL METHOD: Mud Rotary			HAMMER TYPE: AUTOMATIC				
DRILLER: Bobbie D. Fowler			START DATE: 08/23/17			COMP. DATE: 08/23/17			SURFACE WATER DEPTH: 12.5ft				
ELEV (ft)	DRIVE ELEV (ft)	DEPTH (ft)	BLOW COUNT			BLOWS PER FOOT					MOI	LOG	SOIL AND ROCK DESCRIPTION
			0.5ft	0.5ft	0.5ft	0	25	50	75	100			
-90			2	4	11	Match Line					Sat.		DARK GRAY, SILTY, F. SAND (continued)
-95	-94.8	82.0	3	24	18						Sat.		
-100	-99.8	87.0	11	13	12						Sat.		
-105	-104.8	92.0	18	19	31						Sat.		
-110	-110.0	97.2	20	24	19						Sat.		
-115	-115.0	102.2	5	6	8						W		

NC DOT BORE DOUBLE OCRACOKE GEO. GINT G.P.I. NODOT CATLIN GDI 08/29/17